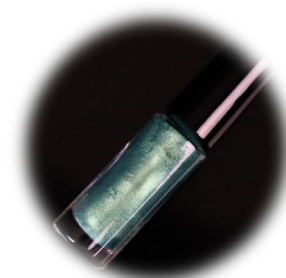


Formulation guideline

Market: Cosmetics
Product: Nail Polish
Code: GL-2505005
Special effect pigment: Geoparl C Emerald | Geodiamond Pearl XS



Product name	INCI name	% WT.	Supplier
A			
Suspension Base PC105 without BP1	Butylacetate (and) Ethylacetate (and) Nitrocellulose (and) Isopropyl Alcohol	95.00	Centre 7
B			
Geoparl C Emerald	Mica (and) Titanium Dioxide (and) CI 77491 (and) CI 77510	3.50	Geotech International B.V.
Geodiamond Pearl XS	Calcium Sodium Borosilicate (and) Titanium Dioxide (and) Tin Oxide	1.50	Geotech International B.V.

Procedure

1. Mix all the ingredients until uniform;
2. Pour into nail polish bottles.

For formulating support and colour matching requests please contact us on marketing@geotech.nl

This information and all technical advices are given in good faith and without warranty. This also applies where proprietary rights of third parties are involved. Our advice does not release you from the obligation to verify the information provided and to test our products as to their suitability for the intended processes and uses. The application, use and processing of our products and the products manufactured by you on the basis of our technical advice are beyond our control and therefore entirely your own responsibility.

Geotech International B.V. | Emrikweg 18 | 2031 BT | Haarlem | The Netherlands
T: +31(0)235317553 | E: info@geotech.nl | www.geotech.nl