



GEOTECH

SPECIAL EFFECT PIGMENTS



 **Midnight Black[®]**

CARBON BLACK

Midnight Black: The deepest black



Midnight Black®, D&C Black 2, is an exclusive, high purity carbon black pigment produced by a furnace black process in the European Union.

This revolutionary carbon black pigment delivers a deep blue-black tone, an effect which cannot be achieved by any other cosmetic pigment. Its unmatched intensity allows to create a wide range of black cosmetics like mascaras, nail polish and eyeliner.

- It is the deepest blue-black pigment available on the market
- This material is manufactured using a furnace black process under highly impurity-controlled conditions. Midnight Black® delivers consistent batch to batch performance and rich colour every single time
- Midnight Black® is FDA certified

Besides the traditional 100% powder form, we produce 'ready to use' Midnight Black® dispersions to help customers enhancing the full colour tone of the pigment. These dust free dispersions are very convenient to handle in production.

Product benefits

- External controlled batch certification by the FDA to ensure maximum safety
- Certified as D&C Black 2
- Approved by premium brand owners and major private label manufacturers
- Inert pigment
- Excellent batch to batch consistency
- Ready to use dispersions available

Recommended applications



- Nails



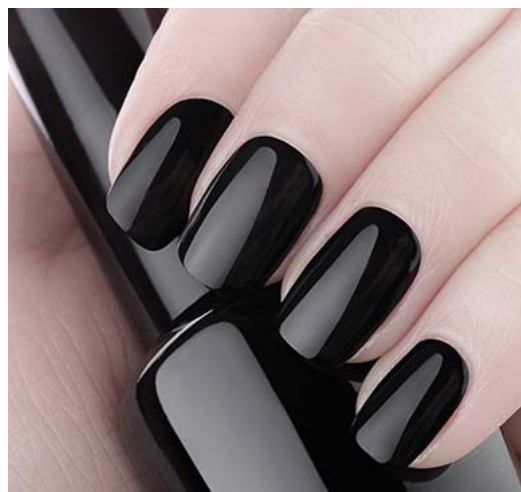
- Eye area



- Lip area



- External



Art. Nr.	Product Name	INCI Name
1909000	Midnight Black	CI 77266 (nano) D&C Black 2
1909090	Midnight Black MBD241 Water	Aqua CI 77266 (nano) Glycerin PVP EDTA Sodium Cetearyl Sulfate Phenoxyethanol Ethylhexylglycerin Caprylyl Glycol
1909060	Midnight Black MBD203 Isododecane	Isododecane CI 77266 (nano) Polyglyceryl-3 Polyricinoleate Propylene Carbonate

Midnight Black

Midnight Black®, D&C Black 2, the pure pigment in powder form

- FDA Approved
- Suitable for lip area, eye area, external and nail polish applications
- Packaging: 2 x 5 kg aluminium bags in a cardboard box
- MOQ: 10 kg
- Shelf life: 10 years original packaging in a closed box under dry conditions

Midnight Black MBD241 Water

Midnight Black®, D&C Black 2, for water-based formulations

- This versatile dispersion simplifies incorporating Midnight Black into your products
- This pre-dispersed formula contains 20% Midnight Black, 42% water and 25% glycerin
- Ready to use dispersion
- Deep black colour
- Glycerin gives a smooth, luxurious texture.
- Ideal for mascaras, eyeliners and a variety of water-based cosmetic applications
- Packaging: 15 kg in a bucket
- MOQ: 15 kg
- Shelf life: 1 year original packaging unopened can under dry conditions

Midnight Black MBD203 Isododecane

Midnight Black®, D&C Black 2, for waterproof mascara formulations

- This pre-dispersed formula contains 20% Midnight Black and 70% Isododecane
- Ready to use dispersion
- Deep black colour
- Ideal for waterproof mascaras
- Packaging: 20 kg in a can
- MOQ: 20 kg
- Shelf life: 5 years original packaging unopened can under dry conditions



GENERAL FORMULATION DO'S AND DON'TS

Well dispersed carbon black

Dispersing carbon black effectively is crucial to achieving its deepest, most vibrant colour tone. Its unique properties require a specific approach for optimal results. Traditional dispersion methods may not be sufficient. High-shear equipment like turbo mills or 3-roll mills are recommended to effectively break down agglomerates and achieve a uniform distribution of the carbon black particles.

By eliminating clumps and achieving a homogenous dispersion, you unlock the full colour potential of Midnight Black®.

A well-dispersed pigment guarantees consistent colour depth and shade across your entire production run.

Proper dispersion contributes to a smoother, creamier texture in your final product.

UV stability

Midnight Black® is not sensitive to UV light

Solvent resistance

Midnight Black® is solvent resistant

Temperature resistance

Midnight Black® is high temperature resistant

Powder dust

Midnight Black® has a small particle size and is a dusty powder. Please, take this into consideration for production. Alternatively, any of the Midnight Black® dispersions available can be used.

Concentration

Finished product	Recommended level of use
Eye liner	Up to 10 %
Eye shadow	Up to 10 %
Brush-on-Brow	Up to 10 %
Mascara	1 - 5 %
Lipstick	0,1 - 10 %
Blusher	0,1 - 10 %
Nail polish	1 - 5 %

FORMULATION GUIDELINE | LIQUID EYELINER

Product: **Liquid Eyeliner**
Code: **GL-211101**
Special effect pigment: **Midnight Black MBD 241 Water | Geoparl C Crystal Silk Beige | Geoflake Crystal Silver XL**

Product name	INCI name	%WT.	Supplier
Phase A			
Water	Water	65.20	
Veegum K Granules	Magnesium Aluminium Silicate	1.00	Vanderbilt Minerals, LLC
Phase B			
Triethanolamine	Triethanolamine	1.40	
Propylene Glycol	Propylene Glycol	8.00	
Phase C			
Ketrol Xanthan Gum	Xanthan Gum	0.30	CP Kelco
Phase D			
Midnight Black MBD 241 Water	Aqua CI 77266 (nano) Glycerin PVP EDTA Sodium Cetearyl Sulfate Phenoxyethanol Ethylhexylglycerin Caprylyl Glycol	2.00	Geotech International B.V.
Geoparl C Crystal Silk Beige	Synthetic Fluorophlogopite Titanium Dioxide CI 77491	8.00	Geotech International B.V.
Geoflake Crystal Silver XL	Synthetic Fluorophlogopite Titanium Dioxide Tin Oxide	10.00	Geotech International B.V.
Phase E			
Stearic Acid	Stearic Acid	2.80	
Glyceryl Stearate	Glyceryl stearate	0.80	
Oleyl Alcohol	Oleyl Alcohol	0.50	

Procedure

1. Disperse the Magnesium Aluminium Silicate into water using high-shear mixing until smooth
2. Add phase B to phase A and mix until uniform
3. Add phase C to phase A+B and mix until uniform
4. Add phase D to phase A+B+C and mix until uniform
5. Heat phase ABCD to 75°C ± 5°C
6. Premix phase E to 75°C ± 5°C
7. Add phase E to phase ABCD and mix until uniform
8. Cool to 35°C ± 5°C
9. Pour into eyeliner container



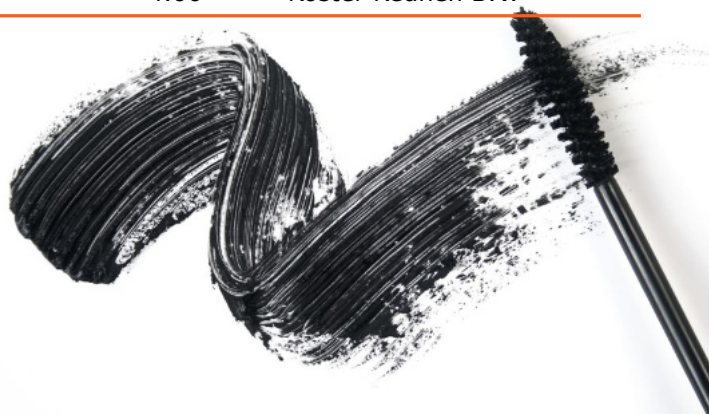
FORMULATION GUIDELINE | MASCARA

Product: **Mascara**
 Code: **GL-211102**
 Special effect pigment: **Midnight Black MBD 241 Water | Geopearl C Crystal Glittering Sun Gold**

Product name	INCI name	%WT.	Supplier
Phase A			
Water	Water	56.25	
Ketrol T	Xanthan Gum	0.15	CP Kelco
Veegum HV	Magnesium Aluminium Silicate	0.55	Vanderbilt Minerals LLC
Midnight Black MBD 241 Water	Aqua CI 77266 (nano) Glycerin PVP EDTA Sodium Cetearyl Sulfate Phenoxyethanol Ethylhexylglycerin Caprylyl Glycol	5.00	Geotech International B.V.
Phase B			
Disodium EDTA	Disodium EDTA	0.05	
Methyl Paraben	Methyl Paraben	0.30	
Triethanolamine	Triethanolamine	0.50	
1,2-Propanediol	1,2-Propanediol	2.00	
Phase C			
Geopearl C Crystal Glittering Sun Gold	Synthetic Fluorphlogopite Titanium Dioxide CI 77491	3.00	Geotech International B.V.
Phase D			
DC 245 Fluid	Cyclopentasiloxane	5.00	Dow Corning
Dowsil 5225C Formulation Aid	Cyclopentasiloxane (and) PEG/PPG-18/18 Dimethicone	1.00	Dow Corning
Beeswax	Beeswax	10.00	Koster Keunen B.V.
Stearic Acid	Stearic Acid	2.00	
Glyceryl Stearate	Glyceryl Stearate	2.00	
Phase E			
Stearyl Alcohol	Stearyl Alcohol	2.00	
Polyisobutene	Polyisobutene	1.00	
Preservative	Preservative	1.20	
PVP K-30	PVP/Polyvinylpyrrolidone	4.00	
Carnauba Wax	Carnauba Wax	4.00	Koster Keunen B.V.

Procedure

1. Mix Phase A
2. Mix Phase B and add to Phase A
3. Add phase C to Phase A+B and heat up until 75°C
4. Add Phase D to Phase A+B+C, keep temperature at 75°C
5. Add Phase E to Phase A+B+C+D and mix until uniform
6. Cool to 40° and pour into container.



ABOUT US

Enhancing product appearances

Geotech International B.V., founded in 1984, manufactures and distributes special effect pigments. We are a privately owned family business with offices in The Netherlands, France and Turkey. A global sales network serves over 800 customers worldwide with 16 product lines.

Nowadays the company is managed by the third generation, focusing on innovation and sustainability. GEOTECH's sustainability program has been recognized by EcoVadis for its success, consistently placing us among the top-rated companies they assess. A certified quality management system based on ISO 9001 and GMP standards ensures reliability and excellence.

With over 450 special effect pigments in our portfolio we offer a diverse range of products for the cosmetics industry. An experienced team of specialists is available to provide you with a high level of service and technical support.

GEOTECH's special effect pigments are used globally in various industries to differentiate consumer products by creating attractive and luxurious appearances.



ecovadis



Geotech International B.V.
info@geotech.nl
+31 (0) 23 531 75 53
www.geotech.nl

Explore our complete portfolio for
the cosmetics industry at
www.geotech.nl

