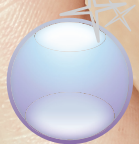




**GEOTECH**

SPECIAL EFFECT PIGMENTS



**Geoparl**<sup>®</sup>

CRYSTAL PEARLESCENT PIGMENTS



Geoparl® C Crystal is a range of premium quality synthetic pearlescent pigments suitable for cosmetic applications.

The characteristic shimmer of Geoparl® C Crystal pearlescent pigments has been designed to match the unique lustre of natural pearls. The basic structure is a platelet synthetic mica which is coated with a metal oxide. GEOTECH offers titanium dioxide, iron oxide and colour coated synthetic pearlescent pigments.

Resulting from reflected, refracted and transmitted light patterns developed at the multiple interfaces between the layers, Geoparl® C Crystal pearlescent pigments provide unsurpassed performance in brightness and colour play varying from white to earth tone effects.

Reflective effects from matte softness (1 – 5 micron) to scattering reflection (100 – 1000 micron) can be obtained by a wide variety of particle sizes. The total range contains over 75 products. Geoparl® C Crystal pigments are able to create an infinite range of visual effects that capture your eye and give unrivalled elegance to any finished product.

## Product benefits

---

- Excellent batch to batch consistency
- Low heavy metal content
- Stability in cosmetic formulations
- In compliance with cosmetic regulations
- Globally used by major cosmetic brands

## Recommended applications

---



- Nails



- Eye area



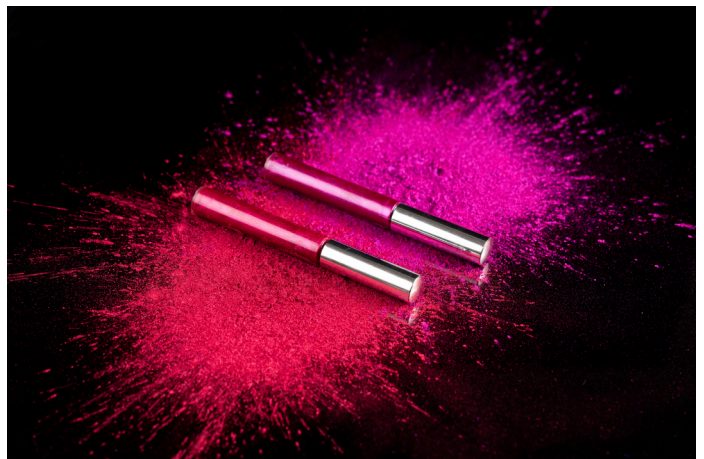
- Lip area



- External



- Rinse off



**Geoparl® C Crystal Interference range**

Art. Nr.	Product Name	Particle size (µm)	INCI Name
1075795	Geoparl C Crystal Silk Gold	5 - 25	Synthetic Fluorphlogopite   Titanium Dioxide   Tin Oxide
1075811	Geoparl C Crystal Silk Red	5 - 25	Synthetic Fluorphlogopite   Titanium Dioxide   Tin Oxide
1075819	Geoparl C Crystal Silk Violet	5 - 25	Synthetic Fluorphlogopite   Titanium Dioxide   Tin Oxide
1075829	Geoparl C Crystal Silk Blue	5 - 25	Synthetic Fluorphlogopite   Titanium Dioxide   Tin Oxide
1075839	Geoparl C Crystal Silk Green	5 - 25	Synthetic Fluorphlogopite   Titanium Dioxide   Tin Oxide
1075800	Geoparl C Crystal Gold	10 - 60	Synthetic Fluorphlogopite   Titanium Dioxide   Tin Oxide
1075810	Geoparl C Crystal Red	10 - 60	Synthetic Fluorphlogopite   Titanium Dioxide   Tin Oxide
1075820	Geoparl C Crystal Violet	10 - 60	Synthetic Fluorphlogopite   Titanium Dioxide   Tin Oxide
1075830	Geoparl C Crystal Blue	10 - 60	Synthetic Fluorphlogopite   Titanium Dioxide   Tin Oxide
1075840	Geoparl C Crystal Green	10 - 60	Synthetic Fluorphlogopite   Titanium Dioxide   Tin Oxide
1075850	Geoparl C Crystal Bright Gold	10 - 100	Synthetic Fluorphlogopite   Titanium Dioxide   Tin Oxide
1075860	Geoparl C Crystal Bright Red	10 - 100	Synthetic Fluorphlogopite   Titanium Dioxide   Tin Oxide
1075870	Geoparl C Crystal Bright Violet	10 - 100	Synthetic Fluorphlogopite   Titanium Dioxide   Tin Oxide
1075880	Geoparl C Crystal Bright Blue	10 - 100	Synthetic Fluorphlogopite   Titanium Dioxide   Tin Oxide
1075890	Geoparl C Crystal Bright Green	10 - 100	Synthetic Fluorphlogopite   Titanium Dioxide   Tin Oxide
1075900	Geoparl C Crystal Sparkling Gold	20 - 150	Synthetic Fluorphlogopite   Titanium Dioxide   Tin Oxide
1075910	Geoparl C Crystal Sparkling Red	20 - 150	Synthetic Fluorphlogopite   Titanium Dioxide   Tin Oxide
1075920	Geoparl C Crystal Sparkling Violet	20 - 150	Synthetic Fluorphlogopite   Titanium Dioxide   Tin Oxide
1075930	Geoparl C Crystal Sparkling Blue	20 - 150	Synthetic Fluorphlogopite   Titanium Dioxide   Tin Oxide
1075940	Geoparl C Crystal Sparkling Green	20 - 150	Synthetic Fluorphlogopite   Titanium Dioxide   Tin Oxide
1075895	Geoparl C Crystal Glittering Green	50 - 250	Synthetic Fluorphlogopite   Titanium Dioxide   Tin Oxide

## PRODUCT RANGE



Geoparl® C Crystal Bright Amber and Geoparl® C Crystal Glittering Amber



**PRODUCT RANGE**

Art. Nr.	Product Name	Particle size (µm)	INCI Name
1075550	Geoparl C Crystal Glittering Gold	50 - 250	Synthetic Fluorphlogopite   Titanium Dioxide   Tin Oxide
1075865	Geoparl C Crystal Glittering Red	50 - 250	Synthetic Fluorphlogopite   Titanium Dioxide   Tin Oxide
1075875	Geoparl C Crystal Glittering Violet	50 - 250	Synthetic Fluorphlogopite   Titanium Dioxide   Tin Oxide
1075885	Geoparl C Crystal Glittering Blue	50 - 250	Synthetic Fluorphlogopite   Titanium Dioxide   Tin Oxide

**Geoparl® C Crystal Metallic range**

Art. Nr.	Product Name	Particle size (µm)	INCI Name
1075948	Geoparl C Crystal Soft Beige	1 - 15	Synthetic Fluorphlogopite   Titanium Dioxide   CI 77491
1075958	Geoparl C Crystal Soft Bronze	1 - 15	Synthetic Fluorphlogopite   CI 77491
1075963	Geoparl C Crystal Soft Copper	1 - 15	Synthetic Fluorphlogopite   CI 77491
1075968	Geoparl C Crystal Soft Russet	1 - 15	Synthetic Fluorphlogopite   CI 77491
1075964	Geoparl C Crystal Soft Golden Copper	1 - 15	Synthetic Fluorphlogopite   CI 77491
1075950	Geoparl C Crystal Silk Beige	5 - 25	Synthetic Fluorphlogopite   Titanium Dioxide   CI 77491
1075960	Geoparl C Crystal Silk Bronze	5 - 25	Synthetic Fluorphlogopite   CI 77491
1075965	Geoparl C Crystal Silk Copper	5 - 25	Synthetic Fluorphlogopite   CI 77491
1075970	Geoparl C Crystal Silk Russet	5 - 25	Synthetic Fluorphlogopite   CI 77491
1076025	Geoparl C Crystal Rufous	10 - 60	Synthetic Fluorphlogopite   CI 77491
1075961	Geoparl C Crystal Bronze	10 - 60	Synthetic Fluorphlogopite   CI 77491
1075966	Geoparl C Crystal Copper	10 - 60	Synthetic Fluorphlogopite   CI 77491
1076030	Geoparl C Crystal Pumpkin Orange	10 - 60	Synthetic Fluorphlogopite   CI 77491
1075971	Geoparl C Crystal Russet	10 - 60	Synthetic Fluorphlogopite   CI 77491
1076000	Geoparl C Crystal Glittering Bronze	50 - 250	Synthetic Fluorphlogopite   CI 77491
1076010	Geoparl C Crystal Glittering Copper	50 - 250	Synthetic Fluorphlogopite   CI 77491
1076020	Geoparl C Crystal Glittering Russet	50 - 250	Synthetic Fluorphlogopite   CI 77491

## PRODUCT RANGE



Geoparl® C Crystal Bright Amber and Geoparl® C Crystal Russet



**Geoparl® C Crystal Silver/White range**

Art. Nr.	Product Name	Particle size (µm)	INCI Name
1075525	Geoparl C Crystal Matte Silver	1 - 5	Synthetic Fluorphlogopite   Titanium Dioxide
1075500	Geoparl C Crystal Soft Silver	1 - 15	Synthetic Fluorphlogopite   Titanium Dioxide
1075510	Geoparl C Crystal Silk Silver	5 - 25	Synthetic Fluorphlogopite   Titanium Dioxide
1075520	Geoparl C Crystal Silver	10 - 60	Synthetic Fluorphlogopite   Titanium Dioxide
1075530	Geoparl C Crystal Bright Silver	10 - 100	Synthetic Fluorphlogopite   Titanium Dioxide
1075535	Geoparl C Crystal Sparkling Silver	20 - 150	Synthetic Fluorphlogopite   Titanium Dioxide
1075540	Geoparl C Crystal Glittering Silver	40 - 250	Synthetic Fluorphlogopite   Titanium Dioxide
1075640	Geoparl C Crystal Icy White	10 - 60	Synthetic Fluorphlogopite   Titanium Dioxide   Tin Oxide
1075650	Geoparl C Crystal Sparkling Icy White	30 - 120	Synthetic Fluorphlogopite   Silica   Titanium Dioxide   Tin Oxide
1075700	Geoparl C Crystal Glittering Icy White	100 - 260	Synthetic Fluorphlogopite   Silica   Titanium Dioxide   Tin Oxide
1075543	Geoparl C Crystal Sparkling Rainbow	10 - 125	Synthetic Fluorphlogopite   Titanium Dioxide   Tin Oxide
1075545	Geoparl C Crystal Glittering Rainbow	40 - 250	Synthetic Fluorphlogopite   Titanium Dioxide   Tin Oxide
1075547	Geoparl C Crystal Scattering Rainbow	50 - 1000	Synthetic Fluorphlogopite   Titanium Dioxide   Tin Oxide

**Geoparl® C Crystal Amber range**

Art. Nr.	Product Name	Particle size (µm)	INCI Name
1076035	Geoparl C Crystal Amber	10 - 75	Synthetic Fluorphlogopite   CI 77491
1076038	Geoparl C Crystal Bright Amber	10 - 100	Synthetic Fluorphlogopite   CI 77491
1076036	Geoparl C Crystal Sparkling Amber	20 - 150	Synthetic Fluorphlogopite   CI 77491
1076037	Geoparl C Crystal Glittering Amber	40 - 300	Synthetic Fluorphlogopite   CI 77491

## PRODUCT RANGE

### Geoparl® C Crystal Colour Travel range

Art. Nr.	Product Name	Particle size (µm)	INCI Name
1075570	Geoparl C Crystal Sparkling Enchanting Blue	20 - 150	Synthetic Fluorphlogopite   Silica   Titanium Dioxide   Tin Oxide
1075570	Geoparl C Crystal Sparkling Charming Green	20 - 150	Synthetic Fluorphlogopite   Silica   Titanium Dioxide   Tin Oxide
1075590	Geoparl C Crystal Sparkling Flamboyant Fuchsia	20 - 150	Synthetic Fluorphlogopite   Silica   Titanium Dioxide   Tin Oxide
1075600	Geoparl C Crystal Sparkling Magical Gold	20 - 150	Synthetic Fluorphlogopite   Silica   Titanium Dioxide   Tin Oxide
1075610	Geoparl C Crystal Sparkling Luxury Twinkle	30 - 180	Synthetic Fluorphlogopite   Silica   Titanium Dioxide   Tin Oxide
1075575	Geoparl C Crystal Glittering Enchanting Blue	100 - 260	Synthetic Fluorphlogopite   Silica   Titanium Dioxide   Tin Oxide
1075585	Geoparl C Crystal Glittering Charming Green	100 - 260	Synthetic Fluorphlogopite   Silica   Titanium Dioxide   Tin Oxide
1075595	Geoparl C Crystal Glittering Flamboyant Fuchsia	100 - 260	Synthetic Fluorphlogopite   Silica   Titanium Dioxide   Tin Oxide
1075605	Geoparl C Crystal Glittering Magical Gold	100 - 260	Synthetic Fluorphlogopite   Silica   Titanium Dioxide   Tin Oxide
1078260	Geoparl C Crystal CT Sparkling Blue to Red	20 - 150	Synthetic Fluorphlogopite   Silica   CI 77491
1078310	Geoparl C Crystal CT Sparkling Fuchsia to Gold	20 - 150	Synthetic Fluorphlogopite   Silica   CI 77491
1078110	Geoparl C Crystal CT Sparkling Green to Red	20 - 150	Synthetic Fluorphlogopite   Silica   CI 77491
1078210	Geoparl C Crystal CT Sparkling Red to Gold	20 - 150	Synthetic Fluorphlogopite   Silica   CI 77491
1078160	Geoparl C Crystal CT Sparkling Violet to Orange	20 - 150	Synthetic Fluorphlogopite   Silica   CI 77491

### Geoparl® C Crystal Coloured range

Art. Nr.	Product Name	Particle size (µm)	INCI Name
1075980	Geoparl C Crystal Silk Black	5 - 25	Synthetic Fluorphlogopite   CI 77499
1075560	Geoparl C Crystal Super Deep Blue	10 - 60	Synthetic Fluorphlogopite   Titanium Dioxide   CI 77510
1075561	Geoparl C Crystal Super Deep Pink	10 - 60	Synthetic Fluorphlogopite   Silica   Titanium Dioxide   CI 77491   Tin Oxide
1075562	Geoparl C Crystal Super Deep Purple	10 - 60	Synthetic Fluorphlogopite   Silica   Titanium Dioxide   CI 77491   Tin Oxide



**Geoparl® C Crystal Gold range**

Art. Nr.	Product Name	Particle size (µm)	INCI Name
1075805	Geoparl C Crystal Silk Sun Gold	5 - 25	Synthetic Fluorphlogopite   Titanium Dioxide   CI 77491
1075806	Geoparl C Crystal Sun Gold	10 - 60	Synthetic Fluorphlogopite   Titanium Dioxide   CI 77491
1075807	Geoparl C Crystal Bright Sun Gold	10 - 100	Synthetic Fluorphlogopite   Titanium Dioxide   CI 77491
1075808	Geoparl C Crystal Glittering Sun Gold	50 - 250	Synthetic Fluorphlogopite   Titanium Dioxide   CI 77491
1075809	Geoparl C Crystal Scattering Sun Gold	100 - 1000	Synthetic Fluorphlogopite   Titanium Dioxide   CI 77491

**Geoparl® C Crystal Terracotta range**

Art. Nr.	Product Name	Particle size (µm)	INCI Name
1075984	Geoparl C Crystal Silk Terracotta Yellow	5 - 25	Synthetic Fluorphlogopite   CI 77492   triethoxycaprylylsilane
1075985	Geoparl C Crystal Silk Terracotta Red	5 - 25	Synthetic Fluorphlogopite   CI 77492   triethoxycaprylylsilane
1075986	Geoparl C Crystal Silk Terracotta Brown	5 - 25	Synthetic Fluorphlogopite   CI 77491   CI 77492   CI 77499   triethoxycaprylylsilane
1075983	Geoparl C Crystal Silk Terracotta Black	5 - 25	Synthetic Fluorphlogopite   CI 77499   triethoxycaprylylsilane



PRODUCT RANGE



Geoparl® C Crystal Bright Titanium



**Geoparl® C Crystal Titanium range**

<b>Art. Nr.</b>	<b>Product Name</b>	<b>Particle size (µm)</b>	<b>INCI Name</b>
1076060	Geoparl C Crystal Soft Titanium	1 - 15	Synthetic Fluorphlogopite   Titanium Dioxide   Tin Oxide
1076065	Geoparl C Crystal Titanium	10 - 60	Synthetic Fluorphlogopite   Titanium Dioxide   Tin Oxide
1075971	Geoparl C Crystal Bright Titanium	10 - 100	Synthetic Fluorphlogopite   Titanium Dioxide   Tin Oxide
1076070	Geoparl C Crystal Glittering Titanium	50 - 200	Synthetic Fluorphlogopite   Titanium Dioxide   Tin Oxide

**Order details****Available packaging**

- 5 kg Nett weight
- 25 kg Nett weight

**Shelf life**

- 10 years original packaging stored in a closed box under dry conditions

**Product data**

- Product data sheets and additional technical product information are available on <https://geotech.nl/>



## GENERAL FORMULATION DO'S AND DON'TS

### Water- or solvent based formulations

Geoparl® C Crystal special effect pigment are suitable for water and solvent based formulations.

### Grinding

Geoparl® C Crystal special effect pigments disperse well without grinding. They can be added to the powder system while stirring after milling of the organic / inorganic pigments and before the binder is added.

### UV stability

Geoparl® C Crystal special effect pigments with cosmetic colourants can be sensitive to UV light.

### Temperature resistance

Geoparl® C Crystal pearlescent pigments are high temperature resistant.

### Storage and compliance

Opened bags should be stored in closed boxes under dry conditions to avoid the influence of moisture.

Geoparl® C Crystal pigments are nontoxic, water- and solvent resistant effect pigments. They comply to the main regulations for cosmetics. Reflective effects from matte softness (1 – 5 micron) to scattering reflection (100 – 1000 micron) can be obtained by a wide variety of particle sizes. The total range contains over 75 products. Geoparl® C Crystal pigments are able to create an infinite range of visual effects that capture your eye and give unrivalled elegance to any finished product.

### Concentration

Finished product	Recommended level of use
Hair styling gel	0,01 - 0,1 %
Hair colouring gel	3 - 5 %
Shower gel	0,01 - 0,1 %
Eye shadow gel	15 - 20 %
Skin gel	0,05 - 0,1 %
Soaps	0,3 - 4,0 %
Pressed powder	30 - 70 %
Loose powder	Up to 100 %
Blusher	1 - 5 %
Face/body powder	1 - 5 %
Lipstick	12 - 20 %
Lip balm	3 - 5 %
Lip gloss	3 - 5 %
Lip lacquer	10 - 15 %
Body lotion	1 - 3 %
Shampoo	0,1 - 1 %
Nail polish	1 - 5 %

# FORMULATION GUIDELINE | LIQUID EYELINER

Product: **Liquid Eyeliner**  
Code: **GL-190501**  
Special effect pigment: **Geoparl C Crystal Glittering Amber | Geoparl C Crystal Glittering Titanium**

Product name	INCI name	%WT.	Supplier
<b>Phase A</b>			
Water	Water	65.20	
Veegum K Granules	Magnesium Aluminium Silicate Mineral	1.00	Vanderbilt Minerals, LLC
<b>Phase B</b>			
Triethanolamine	Triethanolamine	1.40	
Propylene Glycol	Propylene Glycol	8.00	
<b>Phase C</b>			
Ketrol Xanthan Gum	Xanthan Gum	0.30	CP Kelco
<b>Phase D</b>			
Geoparl C Crystal Glittering Amber	Synthetic Fluorphlogopite   CI 77491	10.00	Geotech International B.V.
Geoparl C Crystal Glittering Titanium	Synthetic Fluorphlogopite   Titanium Dioxide   Tin Oxide	10.00	Geotech International B.V.
<b>Phase E</b>			
Stearic Acid	Stearic Acid	2.80	
Glyceryl Stearate	Glyceryl stearate	0.80	
Oleyl Alcohol	Oleyl Alcohol	0.50	

## Procedure

1. Disperse the Magnesium Aluminium Silicate into water using high-shear mixing until smooth;
2. Add phase B to phase A and mix until homogeneous;
3. Add phase C to phase A+B and mix until homogeneous;
4. Add phase D to phase A+B+C and mix until homogeneous;
5. Heat phase ABCD to 75°C ± 5°C;
6. Premix phase E in separate vessel and heat to 75°C ± 5°C;
7. Add phase E to phase ABCD and mix until homogeneous;
8. Cool to 35°C ± 5°C;
9. Pour into eyeliner container



## FORMULATION GUIDELINE | LIQUID-GEL

Product: **Liquid-Gel Eyeshadow**  
 Code: **GL-221123**  
 Special effect pigment: **Geoparl C Crystal Glittering Copper | Sunrise 970**

Product name	INCI name	%WT.	Supplier
<b>Phase A</b>			
Enhans PC-38	Polyethylene   Polycyclopentadiene   Stearoxy Dimethicone	11.00	Koster Keunen
Kester Wax K-82P	C18-38 Hydroxystearoyl Stearate	5.00	Koster Keunen
Kester Wax K-82H	C20-40 Alkyl Stearate	2.00	Koster Keunen
Octyldodecanol	Octyldodecanol	15.00	Koster keunen
<b>Phase B</b>			
Sunrise 970	Mica	4.00	Geotech International B.V.
<b>Phase C</b>			
Isononyl Isononanoate	Isononyl Isononanoate	7.00	
Belsil PDM20	Trimethylsiloxysilicate Dimethicone	5.00	Wacker
<b>Phase D</b>			
Belsil TMS 803	Trimethylsiloxysilicate	5.00	Wacker
Isododecane	Isododecane	23.00	
Geoparl C Crystal Glittering Copper	Synthetic Fluorphlogopite   CI 77491	23.00	Geotech International B.V.

### Procedure

1. Combine all ingredients from phase A and heat to 85°C;
2. Pre-mix phase B and add to phase A, mix until homogeneous;
3. Pre-mix phase C and add to phase A+B, mix until homogeneous;
4. Pre-mix phase D and add to phase A+B+C, mix until homogeneous;
5. Cool and fill into container.

## ABOUT US

Geotech International B.V., founded in 1984, manufactures and distributes special effect pigments. We are a privately owned family business with offices in The Netherlands, France and Turkey. A global sales network serves over 800 customers worldwide with 16 product lines.

Nowadays the company is managed by the third generation, focusing on innovation and sustainability. GEOTECH's sustainability program has been recognized by EcoVadis for its success, consistently placing us among the top-rated companies they assess. A certified quality management system based on ISO 9001 and GMP standards ensures reliability and excellence.

With over 450 special effect pigments in our portfolio we offer a diverse range of products for the cosmetics industry. An experienced team of specialists is available to provide you with a high level of service and technical support.

GEOTECH's special effect pigments are used globally in various industries to differentiate consumer products by creating attractive and luxurious appearances.



ecovadis



### Formulations

Visit [www.geotech.nl/inspiration](http://www.geotech.nl/inspiration) to explore a variety of formulations developed by our cosmetic chemists using our special effect pigments. Each formulation undergoes rigorous testing to ensure exceptional performance.

If you have a specific formulation in mind, we have a large database of formulations available to our clients, let us know what you are looking for. We are ready to help you bring your vision to life.



Explore our complete portfolio for the cosmetics industry at [www.geotech.nl](http://www.geotech.nl)



Geotech International B.V.  
info@geotech.nl  
+31 (0) 23 531 75 53  
www.geotech.nl