



**GEOTECH**

SPECIAL EFFECT PIGMENTS

**SPECIAL EFFECT PIGMENTS  
FOR THE COSMETICS  
INDUSTRY**

## Special effect pigments for the cosmetics industry



### GEOTECH | Enhancing product appearances

Geotech International B.V., founded in 1984, manufactures and distributes special effect pigments. We are a privately owned family business with offices in The Netherlands, France and Turkey. A global sales network serves over 800 customers worldwide with 15 product lines.

Nowadays, the company is managed by the third generation, focusing on innovation and sustainability. GEOTECH's sustainability program has been recognized by EcoVadis for its success, consistently placing us among the top-rated companies they assess. A certified quality management system based on ISO 9001 and GMP standards ensures reliability and excellence.

With over 450 special effect pigments in our portfolio, we offer a diverse range of products for the cosmetics industry. An experienced team of specialists is available to provide you with a high level of service and technical support.

GEOTECH's special effect pigments are used globally in various industries to differentiate consumer products by creating attractive and luxurious appearances.



ecovadis



## Our Brands

### Effect pigments



### Intense black pigments



### Glitter



### Holographic pigments



### Metallic Pigments



### Functional fillers



### Recommended applications



- Nails



- Eye area



- Lip area



- Rinse off



- External

## Pearlescent pigments

Pearlescent pigments are partially translucent powders formed by depositing titanium dioxide and/or iron oxides onto a specific substrate. They provide fascinating colour and visual effects to cosmetics. The translucent pigments easily reflect light because of their smooth surface. The lustre of light reflected off of the platelets changes depending on the particle size. Smaller particles provide a satin sheen, while coarse ones give sparkling and glittering effects.

GEOTECH's pearlescent pigments are based on responsibly sourced natural mica and synthetic mica.



**Geopearl<sup>®</sup>**  
PEARLESCENT PIGMENTS

*Conventional natural mica pearlescent pigments*

Traditional pearlescent pigments based on responsibly sourced natural mica, coated with combinations of titanium dioxide and iron oxides offering visual effects that imitate natural pearls and add elegance to cosmetics.

Recommended applications



**Properties and features**



Chemical composition:  
Mica | Titanium Dioxide | Tin Oxide | Iron Oxide

Available in particle sizes ranging from 1 – 15 micron to 50 - 500 micron

A product range which contains over 100 products

High temperature resistant

In compliance with cosmetic regulations

Solvent and water resistant

**Geopearl<sup>®</sup>**  
CRYSTAL PEARLESCENT PIGMENTS

*Premium synthetic mica pearlescent pigments*

The second generation of pearlescent pigments is based on synthetic mica, coated with combinations of silica, titanium dioxide and iron oxides. These pigments provide unsurpassed performance in brightness and colour purity varying from white to metallic earth tone effects.

Recommended applications



**Properties and features**



Chemical composition:  
Synthetic Fluorophlogopite | Silica | Titanium Dioxide | Tin Oxide | Iron Oxide

Available in particle sizes ranging from 1 – 5 micron to 50 - 1000 micron

A product range which contains over 100 products

High temperature resistant

UV resistant

Solvent and water resistant

Good batch-to-batch consistency

Low heavy metal content

In compliance with cosmetic regulations

**Geocarmen<sup>®</sup>**  
SPECIAL EFFECT PIGMENTS

*Red special pearlescent pigments*

This specialized range delivers exceptional red brilliance and depth, utilizing premium carmine on natural or synthetic mica substrates. Designed for high-impact, premium formulations, this line ensures the deepest and richest red available.

Recommended applications



**Properties and features**



Chemical composition:  
Synthetic Fluorophlogopite | Mica | Titanium Dioxide | Tin Oxide | Iron Oxide | Carmine

Good batch-to-batch consistency

In compliance with cosmetic regulations

## Effect pigments



### Premium Substrate-Free Colour Travel Pigments

Silux® Aurora is a revolutionary uncoated pigment, unlike traditional effect pigments. Composed of thin layers of silica and titanium dioxide, it delivers a vibrant three-stage colour travel effect. With minimal quantity, Silux® Aurora creates exceptional interference and colour play.

#### Recommended applications



#### Properties and features

Chemical composition:  
Silica | Titanium Dioxide

Available particle sizes:  
10 – 75 micron | 40 - 250 micron

Iridescent Effect

UV-Resistant

Temperature Resistant

Solvent and water resistant

Excellent batch-to-batch consistency

In compliance with cosmetic regulations



### Plastic free glitter effects

This innovative product range is specifically developed as a sustainable alternative for traditional polyester based glitter. The basic structure of this product line is a coarse, thin platelet of synthetic mica, coated with combinations of titanium dioxide, iron oxide or colourants.

#### Recommended applications



#### Properties and features

Chemical composition:  
Synthetic Fluorophlogopite | Titanium Dioxide |  
Tin Oxide | Iron Oxide | Pigments

Available particle sizes:  
200 – 500 micron | 500 - 1000 micron

Available colours:  
Silver | White | Red Gold | Royal Blue | Salmon |  
Lavender | Green | Rainbow

Plastic free glitter effect

Smooth skin and nail feel

Controlled unique narrow particle size distribution

In compliance with cosmetic regulations



### Sophisticated sparkling glass flakes

A premium line of pearlescent pigments based on borosilicate glass flakes, coated with combinations of titanium dioxide, iron oxides or silver Ag. Thanks to a variety of coarse particle sizes, they are an extraordinary option for exclusive glittering effects.

The exclusive Geodiamond Silver Ag pigments produce a brilliant mirror like sparkling reflection which cannot be achieved by any other technology.

#### Recommended applications



#### Properties and features

Chemical composition:  
Calcium Sodium Borosilicate | Titanium Dioxide |  
Tin Oxide | Iron Oxide | Silver Ag

Available in particle sizes ranging from 10 – 60  
micron to 100 - 500 micron

Low heavy metal content

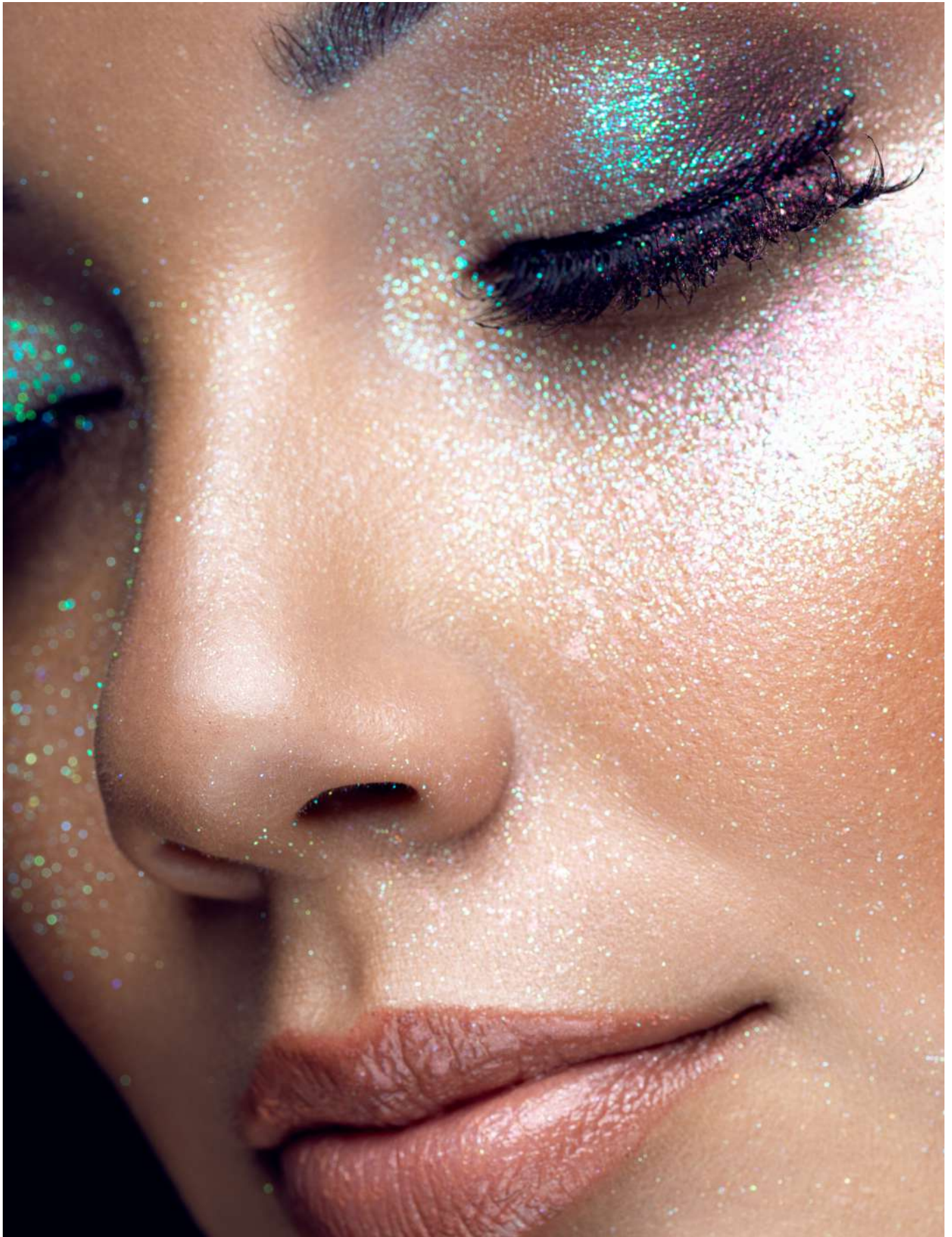
High temperature resistance

In compliance with cosmetic regulations

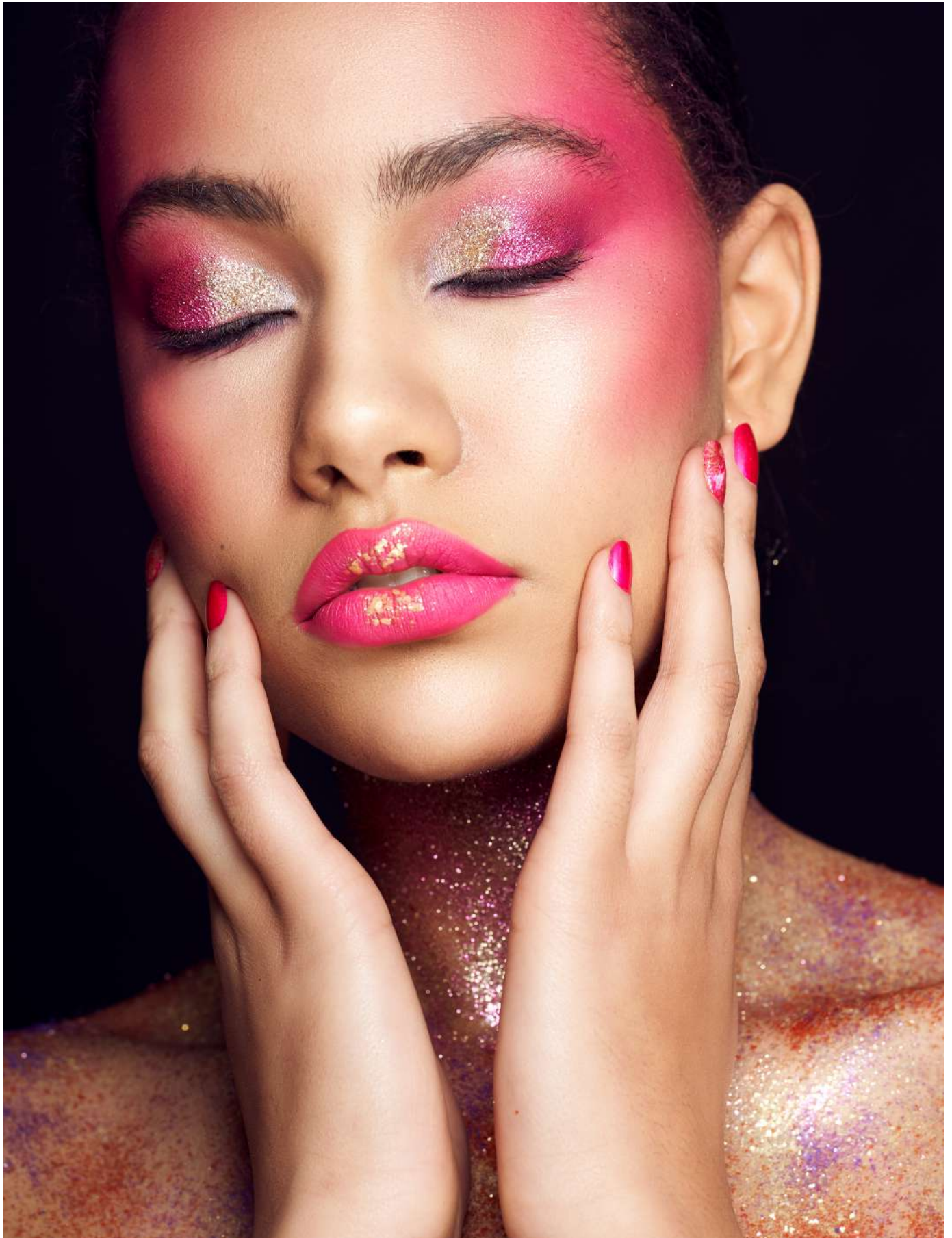
Solvent and water resistant

Good batch-to-batch consistency





# Glitter



Glitter are brilliantly coloured particles of precision cut, polyester or cellulose films. The glitter portfolio for cosmetics contains 5 product lines. A wide range of colours and effects is available in a variety of particle sizes from 100 micron to 400 micron. These high reflective particles are used in a wide variety of products.



*Premium brilliant particles*

A premium range of precision cut polyester particles offering high brilliance and fabulous reflection of light. The versatility, quality and durability of Geoshine® allows it to be used in a wide variety of cosmetics.

Recommended applications



### Properties and features



Chemical composition:

Polyethylene Terephthalate | Polyurethane 11 | Aluminium | Pigment

Available in particle sizes ranging from 100 micron to 400 micron

Particle thickness: 12 micron | 24 micron

Product range which contains 36 colours

Temperature resistant up to 180° C

UV resistant

Solvent and water resistant



*Biodegradable brilliant particles*

An environmentally friendly product line of precision-cut particles, crafted from a cellulose film derived from wood pulp. This glitter range is known for its high brilliance and great reflection, contributing to a stunning effect while aligning with eco-conscious values. Geonature® biodegradable glitter is certified according to OECD Guideline 301F.

Recommended applications



### Properties and features



Chemical composition:

Microcrystalline cellulose | Glycerine | Acrylates Copolymer | Pigment

Available in particle sizes: 100 micron | 200 micron

Biodegradable particles

Available colours:

Bright Silver | Malibu Gold | Red | Jade | Blue | Black | Lilac | Fuchsia | Sand | Holo Silver

Traditional glitter effect

In compliance with cosmetic regulations

# Iridescent and holographic glitter



*Premium brilliant iridescent particles*

Traditionally used in a wide variety of cosmetics applications these precision-cut iridescent glitter particles refract light in the colours of the rainbow.

The colour of Geocrystal® glitter is obtained by interference, a phenomenon that occurs when visible light passes through thin layers with different refractive indices. Because of the transparency of Geocrystal® glitter the particles provide an effect which changes with each base colour it is applied on.

## Recommended applications



## Properties and features



Chemical composition:  
Polyethylene Terephthalate | Acrylates Copolymer

Available in particle sizes ranging from 100 micron to 400 micron

Particle thickness: 30 micron

UV resistant

Water and solvent resistant



*Premium brilliant holographic particles*

A polyester based glitter range which offers a multi-colour glittering appearance. The base film for these particles is embossed prior to metallizing, providing a unique holographic effect without the presence of any colour pigment. The versatility, quality and durability of Geospectra® allows it to be used in a wide variety of cosmetics.

## Recommended applications



## Properties and features



Chemical composition:  
Polyethylene Terephthalate | Polyurethane 11  
| Aluminium | Pigment

Available in particle sizes ranging from 100 micron to 400 micron

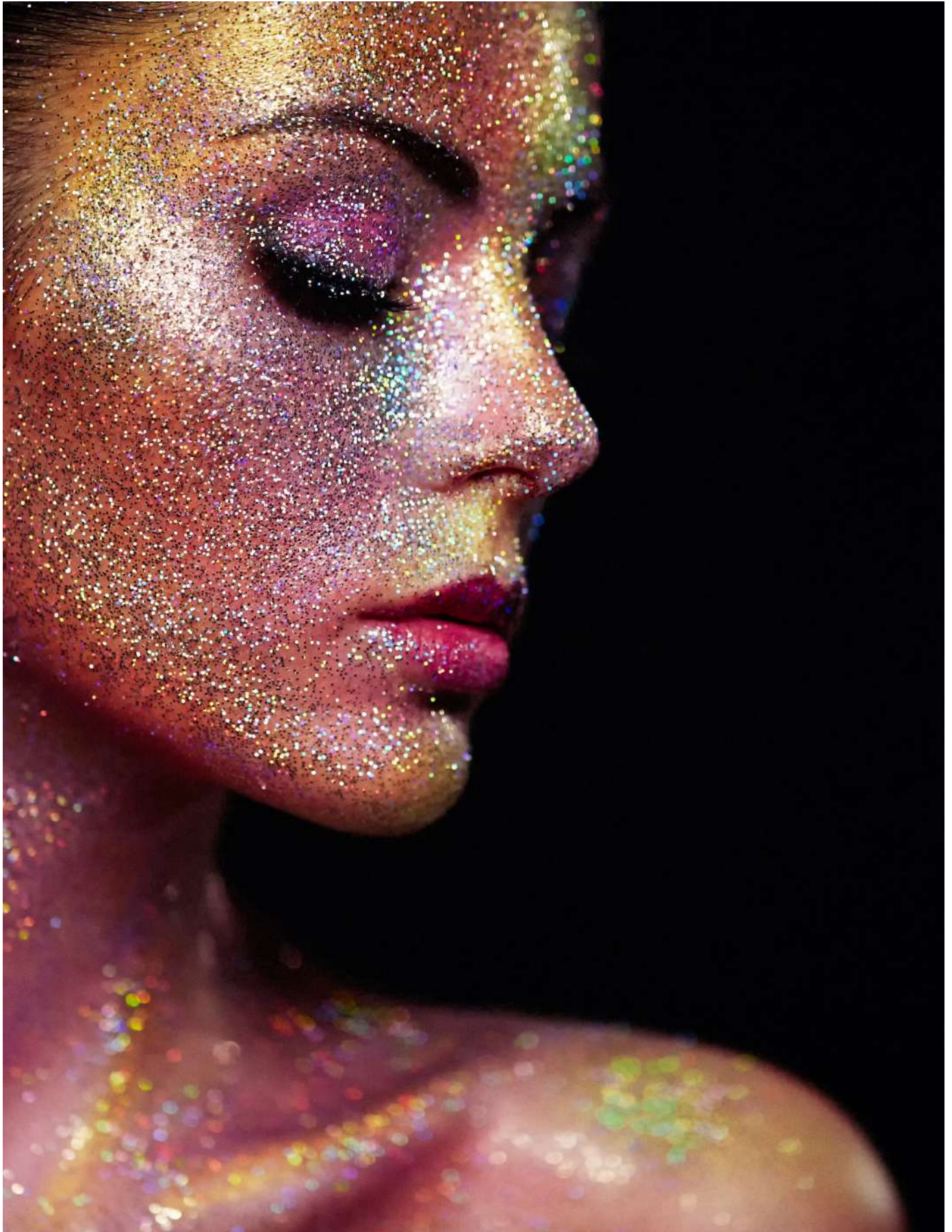
Particle thickness:  
12 micron | 24 micron | 48 micron

Temperature resistant up to 180° C

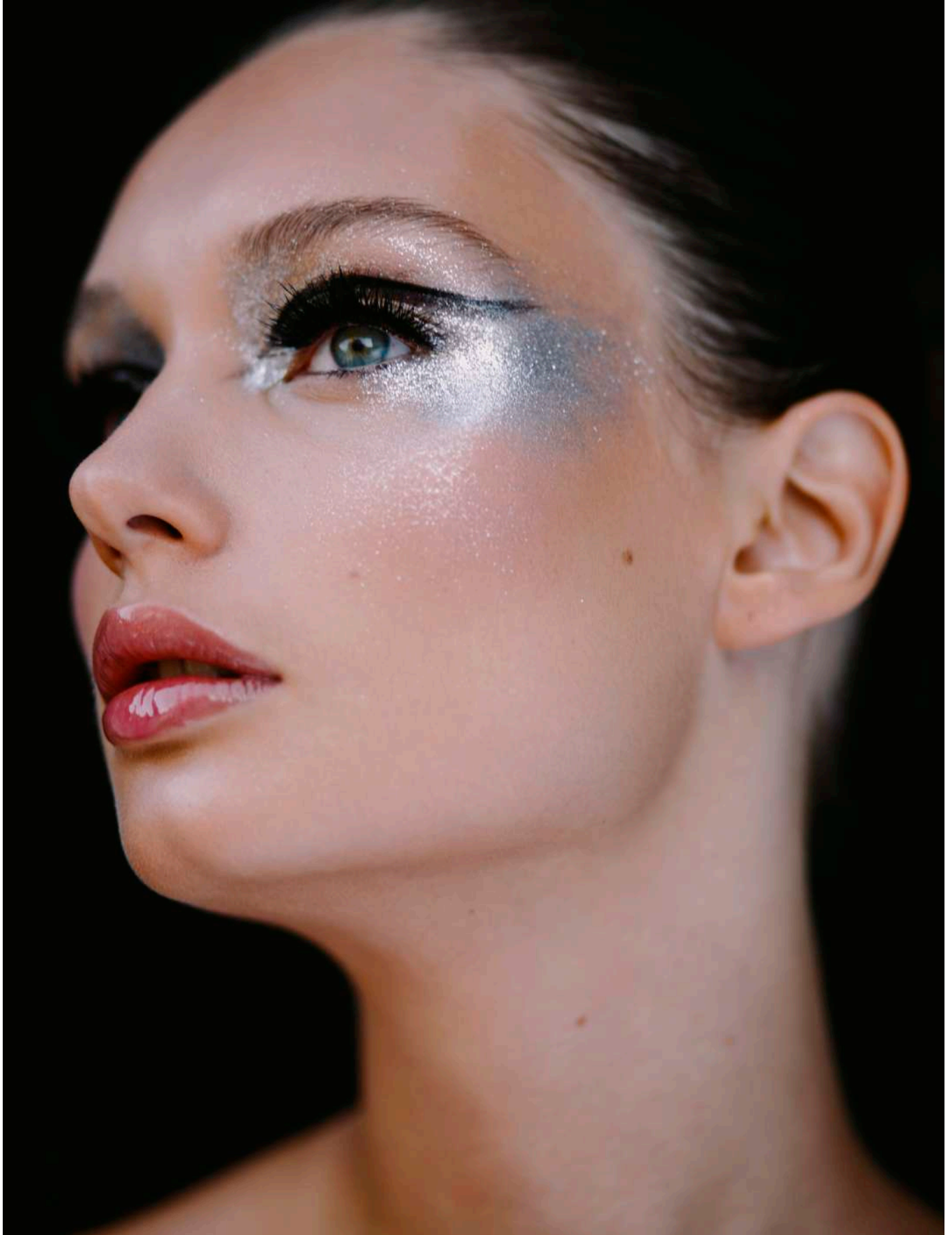
UV resistant

Solvent and water resistant





## Metallic and holographic pigments



# Metalloy<sup>®</sup>

ALUMINIUM PIGMENTS

*High quality brilliant metallic particles*

High quality aluminium particles offering silver metallic effect. The silica coated aluminium powders are innovative aluminium pigments especially developed for application in colour cosmetics.



## Properties and features

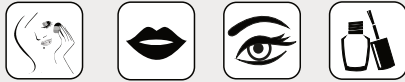
Chemical composition:  
Aluminium | Silica

Particle sizes: 30 - 60 micron | 50 - 80 micron | 50 - 150 micron

Suitable for nitrocellulose and waxed based formulations

High coverage

### Recommended applications



# Galaxy<sup>®</sup>

HOLOGRAPHIC PIGMENTS

*Ultra polychromatic reflections*

This exclusive pigment provides ultra-polychromatic glittering effects for high-end cosmetic products. Thanks to a 3 micron particle thickness Galaxy Hologram Silver offers unique styling possibilities to enhance cosmetics. It can be incorporated into thin layers and provides sophisticated holographic effects in low concentrations.



## Properties and features

Chemical composition:  
Acrylates Copolymer | Aluminium

Particle size: 10 - 80 | 100 - 800 | 30 - 150 micron

In compliance with cosmetic regulations

UV resistant

Water resistant

### Recommended applications



# Intense black pigments and functional fillers

## Midnight Black®

INTENSE BLACK PIGMENTS

*Intense pigments and bio-dispersions*

Midnight Black® (D&C Black 2) is an exclusive, EU-produced and FDA-certified carbon black pigment delivering the deepest blue-black shade in the market.

Expanding our portfolio, Midnight Black Bio offers a 100% bio-based, sustainable dispersion. It provides intense colour, easy formulation and broad binder compatibility for water-based cosmetics.

Recommended applications



### Properties and features

- Batch to batch consistency
- Inert pigment and ready to use dispersions
- In compliance with cosmetic regulations
- UV and solvent resistant
- High temperature resistant

## Sunrise®

MICA

*Natural and synthetic mica functional fillers*

Sunrise® mica is the perfect choice for cosmetics. It creates buildable coverage without completely covering the skin. In colour cosmetics Sunrise® mica is used to give balance and consistency to pressed powders. Mica gives a smooth texture and adds a bit of shine to the product surface.

Recommended applications



### Properties and features

- Chemical composition: Natural mica or synthetic fluorophlogopite
- Batch to batch consistency
- Good skin adhesion
- Excellent lubricity
- Low abrasiveness
- High UV stability
- Resistant to heat, weather and chemicals

## Geosoft®

SILICA SPHERES

*Spherical functional fillers*

Geosoft® is a versatile range of 100% natural, non-plastic spherical silica designed to deliver an exceptional ball-bearing effect. These innovative beads allow formulators to create microplastic-free cosmetics without compromising performance, offering a perfect balance of sensorial elegance, along with superior mattifying and blurring effects across a wide range of applications.

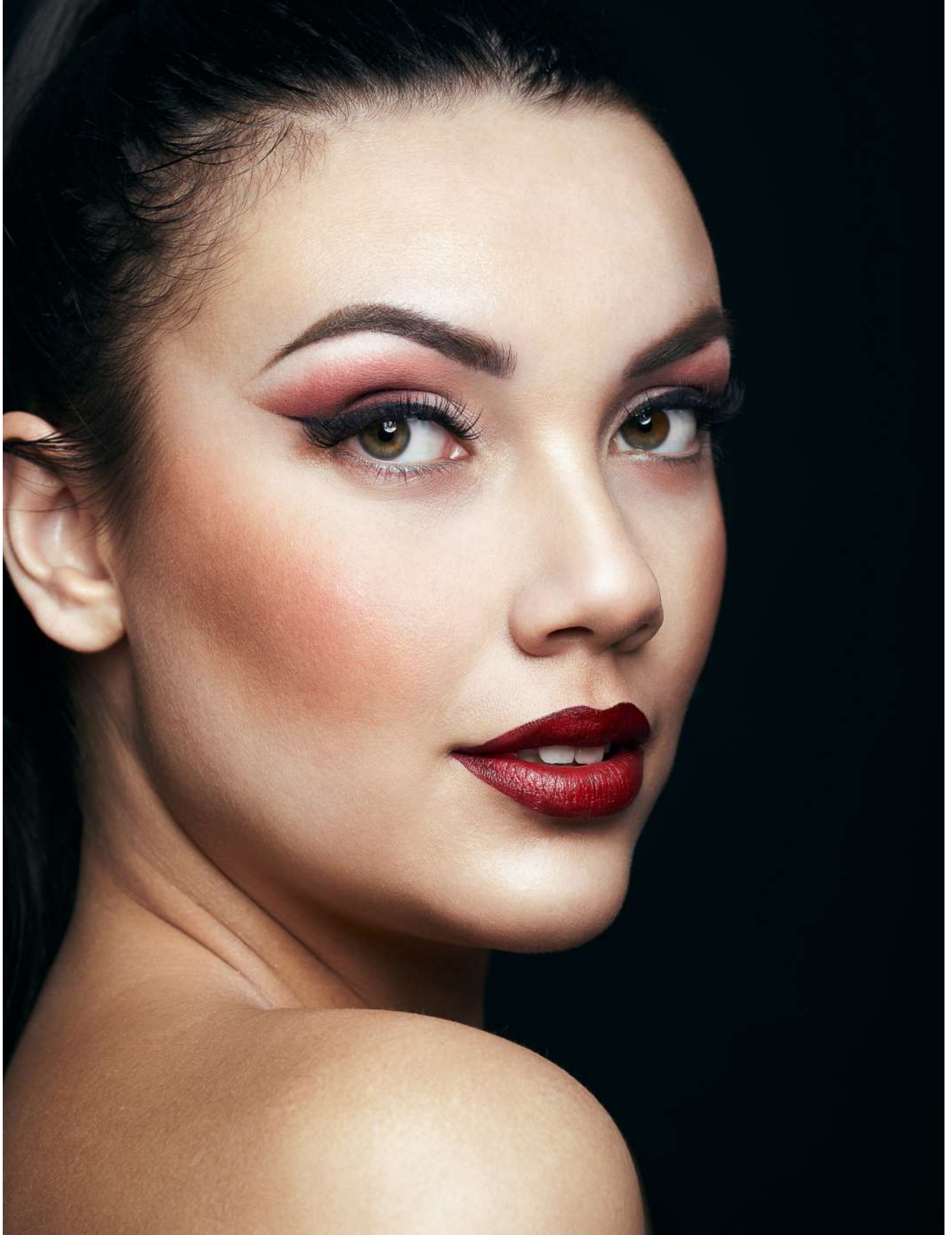
Recommended applications



### Properties and features

- Chemical composition: Silica
- 100% natural origin & non-plastic
- High-performance versatile texturizing agent
- Ball-bearing effect for enhanced sensoriality
- Low abrasiveness
- High UV stability
- Resistant to heat, weather and chemicals





## Application laboratory

Cosmetics offer a powerful means of self-expression, building confidence, and promoting self-care.

At GEOTECH, we continuously innovate by exploring new effects and formulations to meet these demands.

Located in Haarlem, The Netherlands, our in-house cosmetics application laboratory is where we develop formulations and colour concepts using our special effect pigments. This dedicated facility complements our existing laboratory for Quality Control and Product Development.



The activities of the cosmetic application laboratory includes:

- Developing and testing of new formulations
- Creating colour concepts
- Providing technical training on how to formulate with our pigments
- Colour and effect matching

Our cosmetic chemists provide technical support from this facility, enabling clients to fully utilize our products. For an overview of product formulations and colour concepts developed by our team visit [www.geotech.nl/formulations](http://www.geotech.nl/formulations)

Explore our complete portfolio for the cosmetics industry at [www.geotech.nl](http://www.geotech.nl)



Geotech International B.V.  
info@geotech.nl  
+31 (0) 23 531 75 53  
www.geotech.nl